

# STARCRAFT '77

*G. Long*  
PERFORMANCE YOU  
CAN COUNT ON.



**STARCRAFT CRUISERS**

# STARCRAFT

PERFORMANCE YOU  
CAN COUNT ON.

At Starcraft we build in performance you can count on. We concentrate on safety, handling and comfort instead of worrying over fancy trim. We build cruisers with the solid feel of boats that last. The quality that only comes from careful attention to detail. And the elegance of fine materials.

They're easy-to-care-for boats that make the good times even more enjoyable. And family boats that you can count on when the going's rough.

**We Don't Believe In Compromise.** There is no way to build a cruising boat that's right for every boater under all conditions. It simply can't be done. Instead we developed 12 different cruisers.



*The deluxe Islander Mark IV 22 — its spacious cockpit provides roominess and versatility for family fun.*



*Our American Sport 22 and Chieftain Express Hardtop 22 — Starcraft's high performance in your choice of fiberglass or aluminum.*

For different people with different needs: sporty cruisers with runabout speed. Boats that are tough enough to handle open water. Elegant cruisers for families who like to entertain afloat. And basic family cruising boats that more families can afford.

**Your Choice Of Fiberglass Or Aluminum.** Top-quality fiberglass is smooth and glossy, richly colored and can be formed into stylish shapes. It's also nearly maintenance free. Aluminum is lighter, less expensive, incredibly tough, and highly resistant to corrosion.

Fiberglass boats are strong, luxurious, well-styled and a breeze to care for. Aluminum boats can be equally elegant. And

they're less expensive to build and cheaper to run because of the lighter weight.

They're different boats with different strengths. We think that you should have the choice.

**Four Kinds Of Cruisers And A Dozen Different Engines.** We don't just make one kind of boat in different sizes. We build full cabin cruising boats. Sporty cruising runabouts. Express convertibles and hardtops. Versatile cuddy-cabin utility boats. And we offer you a choice of engines to suit your needs.

Our full cabin cruisers are designed for maximum livability on a longer cruise. They have the largest cabins, the most bunk space and the most fully equipped

galleys—compared with the other boats we build. Most are available with optional heads. And every one is built with the space to store the clothes and bedding, extra food and water and the boating gear that makes a cruiser self-sufficient away from home.



*The Starcraft American Express 22 — highly styled, lively runabout performance in a 22-foot cabin cruiser.*

Our sport boats are a lively combination of high-performance runabout and an overnighter. Designed for people who want to cruise but who also want to get where they are going quickly.

Our open Express designs provide more outdoor cockpit space. They give you the room to bring along the gang. The extra space for sunning. And they're all available with outdoor galley and folding tables or dinettes. So you can dine in the fresh air. And, of course, they also have the sleeping space and privacy for longer cruises.

Starcraft's cuddy-cabin cruising boats are built for versatility. They add the shelter of a compact forward cabin to the space and high performance of a lively

runabout. So you can cruise or fish or water-ski with a single boat. At a most attractive price.

We also offer, on many boats, a choice of power systems to suit your individual needs: twin engines or singles. I/O units from 120 to 280 hp. Both Mercruiser and OMC. And we also offer three boats set up for economical outboard power.

**Pride In Appearance.** A boating family should take pride in the way their cruiser looks. Pride in the quality of its finish. And that's why Starcraft boats are built with some of the best materials available. The richness of leather-look vinyl seats. And the glow of teak—the nearly maintenance-free wood traditionally used on the finest yachts.

**How Starcraft Protects Your Family.** Safety is a prime, first requirement of any family cruiser. Which is why every single boat we build either meets or ex-

ceeds the U.S. Coast Guard's standards for built-in foam flotation.

We build our boats with extra strength. Our fiberglass boats, for example, have heavy wooden stiffeners glassed into their hulls. And we double-rivet the joints on our aluminum boats. So our cruising boats are tougher than we hope they ever have to be.

And we make sure our boats are built with all the safety features they're designed to have. That's why we inspect each Starcraft boat more than 100 times before it leaves the plant.

**Built From Experience.** You cannot judge a motorboat in a showroom. The test is on the water. And on the water Starcraft has a proven record.

In fact, we've sold almost a million boats. And we keep on selling more because they really work, and last, and hold up when the going's rough.



*The Chieftain Mark IV 25 — Starcraft's most luxurious aluminum cabin. Perfect for entertaining and cruising comfort at a surprising low price.*

# AMERICAN

THE MOST LUXURIOUS CRUISERS  
STARCRAFT MAKES.

A boat that's really built for cruising must be big enough to let you sleep aboard in honest comfort. But light enough for easy trailering. She must be tough enough to face the elements. But built with the speed and handling to give you sharp performance, too.

Now there are three high-performance Starcraft Americans that meet the test: the new American 25 and American Express 22 and the American Sport 22. They're engineered for cruising comfort and reliability. Turned out with the elegance and strength of fiberglass.



*The new Starcraft American 25 — a true luxury boat. A full cabin cruiser that sleeps five. Fast enough for water skiers, and still large enough for complete family comfort.*

The American 25 is Starcraft's premium cruiser. A fully featured, spacious boat. Completely new this year. She's fitted with roomy bunks for four adults, and also carries a children's double V-berth in the bow. There's a spacious dining table that has room for six. A fully private head complete with stainless steel sink and vanity. Hanging brackets

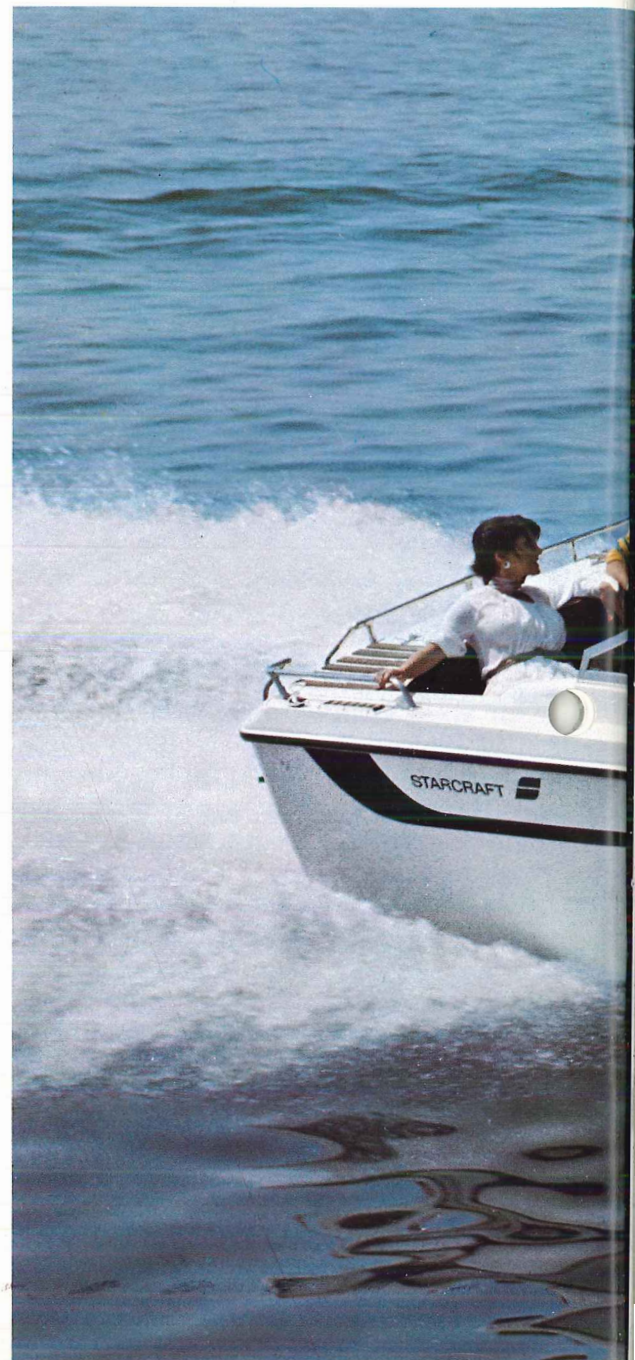
for your clothes. And a modern galley, with a two-burner stove, another sink, and a 2.5-cu.-ft. icebox.

The American 25 also comes with a 20-gallon freshwater tank, a 20-gallon waste-water tank and a demand-water system.

The American Express 22 is a sporty but equally complete family cruiser. She's also new this year, and just as richly finished as the 25. The galley is open to the cockpit for easy entertaining. It's equipped with a stove, a stainless steel sink and a fiberglass-lined icebox. There's a big dinette that doubles as a berth for two at night. And the cozy cabin, with an optional head, can be completely closed — for protection from the elements and total privacy.

The American Sport 22 is a boat that combines a runabout's daytime speed and zest with the cozy comfort of a cuddy-cabin overnighter. She has a deep-V hull, with twin 140 engines capable of over 40 mph. And a tough fiberglass hull that's built to take a beating. And as in a quality sports car, the American's quick performance is joined with a stylish, finely finished interior. There are deep bucket-shaped seats that extend for sunbathing. And a comfortable cuddy cabin with room for two. And even an optional cockpit galley.

And for all their size and comfort, all three of Starcraft's Americans offer the flexibility of easy trailering. All three are built with Starcraft's traditional strength and innovative engineering. And all three are finished like custom boats.



*American Express 22*



*American Express 22 — the American Express's hardtop adds an extra measure of protection for family comfort.*



*American Sport 22 — command instrumentation for twin 140-engine package.*

*(Left) The American Sport 22 — runabout performance and fun in a sleek cuddy-cabin cruiser.*

# CHIEFTAIN

FULL CRUISER COMFORT IN  
ECONOMICAL ALUMINUM.

A lot of boatmen are unaware that some of the finest and most expensive custom oceangoing yachts are made from marine aluminum. Starcraft's Chieftains are built in the same tradition. They're made with the same 5052-type aluminum that's used on those costly yachts, and finished like them with accents of teak.



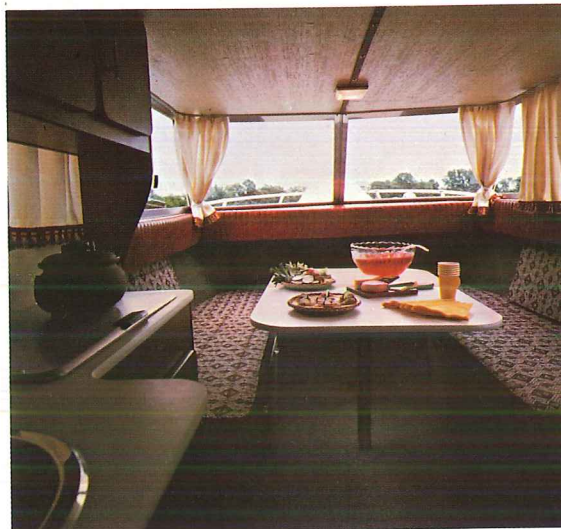
*Chieftain Express Hardtop 22—open-air roominess with a comfortable forward cabin.*

They're put together with the same high standards of aluminum construction, but at a surprisingly modest price.

The Mark IV 25 is Starcraft's most luxurious Chieftain. The spacious cabin of the Mark IV 25 makes for breathing room when you're on a cruise—and for gracious entertaining at dockside or under way. There's a full-sized dining table and a galley complete with stove, sink, icebox and a handsome set of eye-level storage cabinets.

The other roomy full-cabin Chieftains available are the Mark IV 22 I/O and the Mark IV 22 OB.

For those who prefer to spend more time outside, Starcraft also makes the



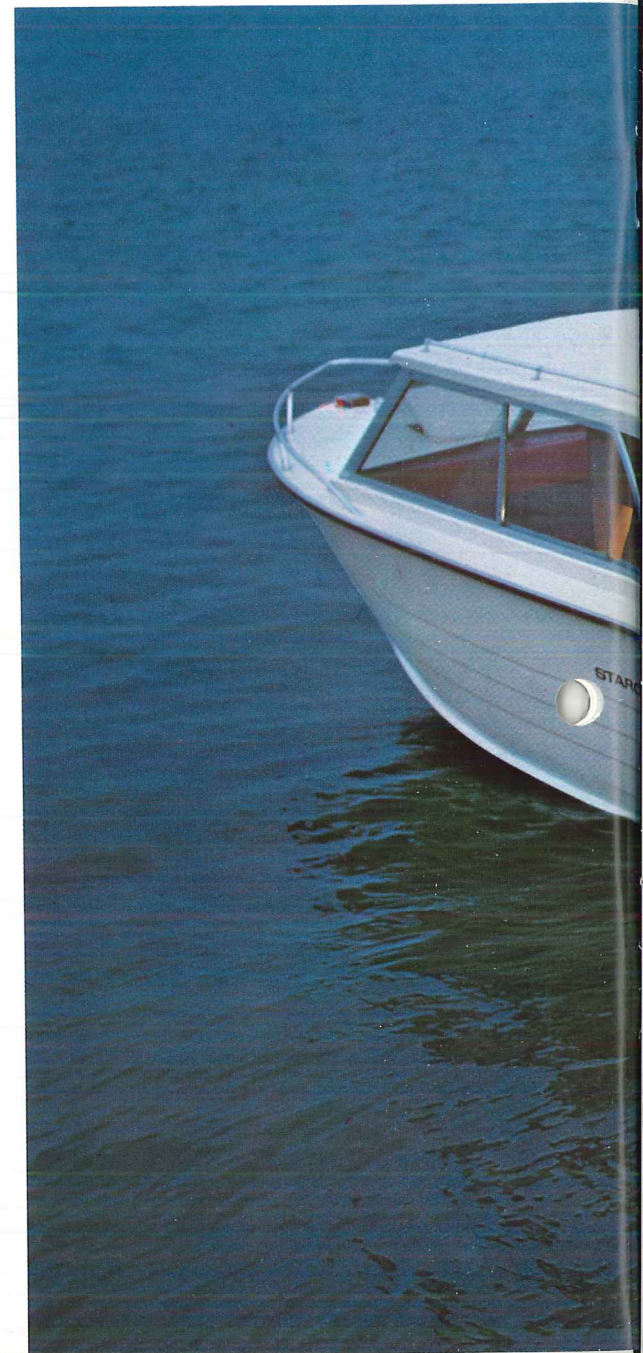
*The Chieftain Mark IV 25's spacious interior. Its dinette area seats 6 for meals and converts into a comfortable sleeping area at night.*

Chieftain Express. There are 22- and 25-foot models, available with convertible canvas or with permanent hardtops.

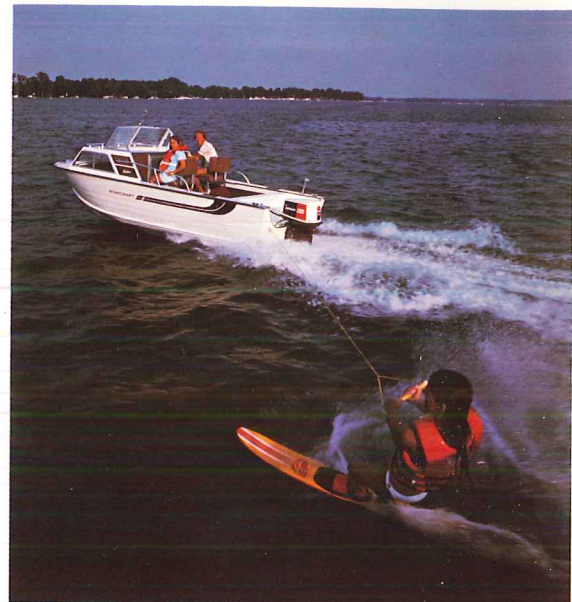
Each has a cozy cabin forward, and a cockpit big enough to accommodate your family and friends. Each is equipped with an open-air dinette and available with an optional galley and an optional marine head.

The light weight of aluminum means a Chieftain costs you less to run. Because a lightweight boat will save on fuel. Will travel on a lighter, less expensive trailer. And go as fast as heavier boats with a lower horsepower, less expensive engine.

Starcraft is the nation's largest builder of aluminum boats. Which is why it costs us less to make the basic hull. So we can put the savings into stronger fittings, longer lasting parts. And a lower price.



*Chieftain Mark IV 25*



*Chieftain 18 OB — the smallest Chieftain offers the comfort of an enclosed cabin in a versatile runabout size.*



*The Chieftain Express Hardtop 22—the double bow V-berths offer added sleeping capacity.*

*(Left) The Chieftain Mark IV 25 — perfect for entertaining a few or a crowd.*

# ISLANDER

VERSATILE WEEKENDER AT  
A SENSIBLE PRICE.

The Islander is a boat with lots of uses: a roomy 22-foot cruiser for a weekend on the water. A trailerable boat you can take along on a summer vacation. A tough and honest fishing boat. Or a sporty runabout.



*Islander Mark IV 22 — the economical cuddy-cabin cruiser with a touch of luxury.*

There is room on an Islander for two to sleep in the private cuddy cabin forward. Room for an optional head. And room for fishing, entertaining or just relaxing in her extra-large-sized cockpit. There's also plenty of storage space for everything from sleeping bags to water skis.

Aluminum construction is the secret of her versatility. It makes the Islander a boat that's light enough to trailer easily. A boat that's fast without consuming lots of fuel. And a boat that's tough enough to cruise on open waters. It also makes her lighter on your budget.

The Islander is tough because we roll lapstraking into the hull to keep it rigid. We guarantee the hull is leakproof because we double-rivet the chines. And

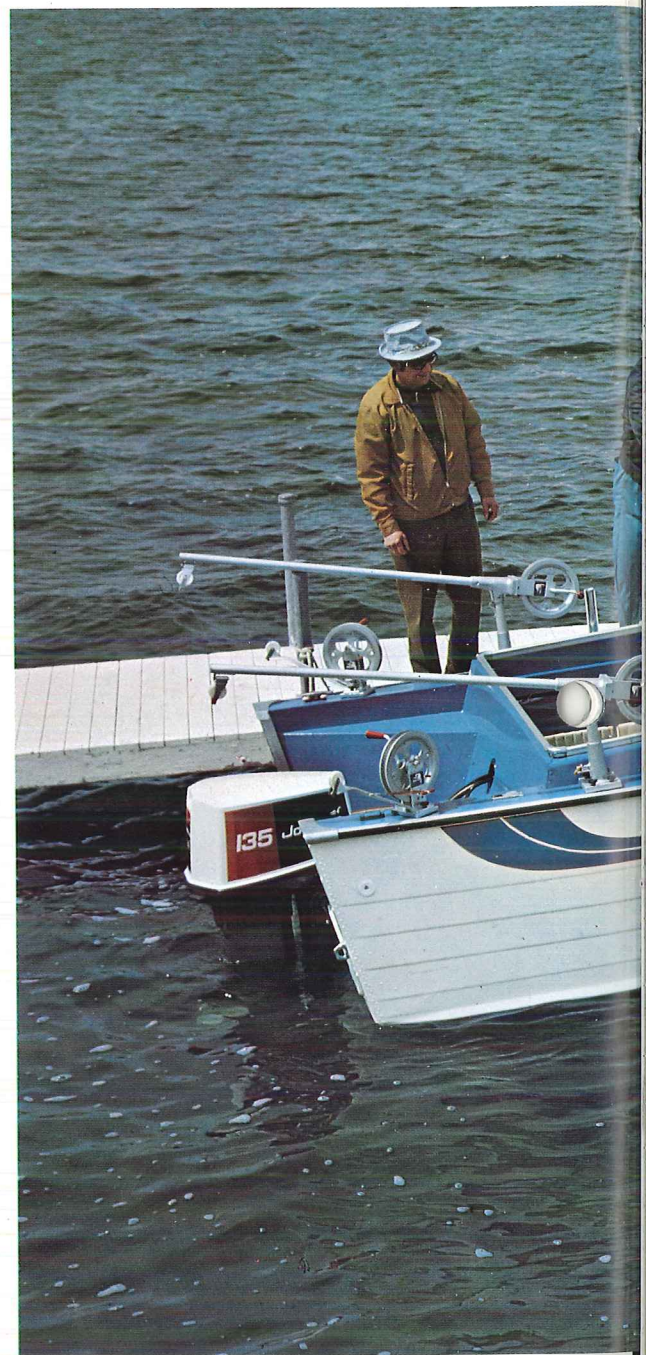
form the bottom from a single sheet of metal—eliminating the weakness of a center seam.

But the Islander is not a roughly finished boat. No rivets or frames are visible inside. Instead there's the richness of leather-look vinyl seats. The comfort of thickly padded cockpit sides. And the richness of the teak that's used as trim.

The Starcraft Islander is available in three different models to suit your boating needs. The roomy and richly finished Islander Mark IV has sleeper seats in the cockpit, a fully padded cabin liner and marine carpeting throughout. The standard Islander is a simpler boat, with the deep and roomy cockpit that fishermen prefer. And the standard Islander also comes in an economical and convenient outboard model.



*The Islander Mark IV 22—roomy cockpit with convertible sleeper seats provides space and comfort for just plain relaxing.*





*Islander 22 (I/O)*



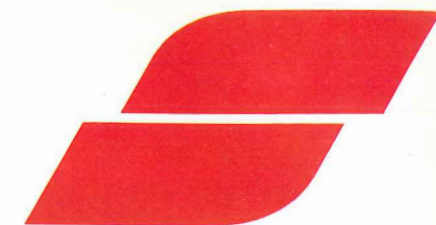
*The Islander Mark IV 22 interior includes curtains, carpeting and a fully padded headliner.*



*The standard Islander 22's cockpit allows you plenty of room. A perfect place for an afternoon of fishing.*

*(Left) The standard Islander 22 OB — strong, versatile and economical.*

# PERFORMANCE YOU CAN COUNT ON IN 10 DIFFERENT STARCRAFT CRUISERS



## American 25 I.O.



Burgundy, Tan or Brown

### Engine Options Specs.

<b>Merc</b>	Center Length: 25' 3"
Tw. 120	Beam: 96"
Tw. 140	Overall Height: 103"
Tw. 470	Transom: H. 55 3/4" W. 93 3/4"
188	Interior Side Depth: 29"
233	Cabin Interior Height: 75 3/4"
255	Rec. Cap. (Lbs.) 2500*
280	Rec. Cap. (Persons) 13
<b>OMC</b>	H.P. 340
190	Fuel Capacity: 97 gal.
235	Wt. Sys. Dry: 3400*
Tw. 120	
Tw. 140	

## American Express 22 I.O.



Burgundy, Tan or Brown

<b>Merc</b>	Center Length: 22' 2 3/4"
Tw. 120	Beam: 96"
Tw. 140	Overall Height: 97"
Tw. 470	Transom: H. 48 1/2" W. 91 1/2"
188	Interior Side Depth: 32"
233	Cabin Interior Height: 63"
255	Rec. Cap. (Lbs.) 2200
280	Rec. Cap. (Persons) 11
<b>OMC</b>	H.P. 340
190	Fuel Capacity: 72 gal.
235	Wt. Sys. Dry: 2750
Tw. 120	
Tw. 140	

## American Sport 22 I.O.



Burgundy, Tan or Brown

<b>Merc</b>	Center Length: 22' 2 3/4"
Tw. 120	Beam: 96"
Tw. 140	Overall Height: 80"
Tw. 470	Transom: H. 48 1/2" W. 91 1/2"
188	Interior Side Depth: 36"
233	Cabin Interior Height: 51"
255	Rec. Cap. (Lbs.) 2200
<b>OMC</b>	Rec. Cap. (Persons) 11
Tw. 120	H.P. 340
Tw. 140	Fuel Capacity: 72 gal.
190	Wt. Sys. Dry: 2500 lbs.
235	

## Chieftain Mk. IV 25 I.O.



Burgundy, Tan or Brown

### Engine Options Specs.

<b>Merc</b>	Center Length: 24' 8"
Tw. 120	Beam: 96"
Tw. 140	Overall Height: 90"
165	Transom: H. 46 1/4" W. 90 1/2"
188	Interior Side Depth: 31"
233	Cabin Interior Height: 67 3/4"
470	Rec. Cap. (Lbs.) 2500
<b>OMC</b>	Rec. Cap. (Persons) 13
Tw. 120	H.P. 280
Tw. 140	Fuel Capacity: 52 gal.
190	Wt. Sys. Dry: 2600 lbs.
235	

## Chieftain Mk. IV 22 I.O./O.B.



Burgundy, Tan or Brown

<b>Merc</b>	Center Length: 21' 6" 21' 7"***
120	Beam: 90 3/4"
140	Overall Height: 83"
165	Trans: H. 43" 21"*** W. 84 1/4"
470	Interior Side Depth: 33 1/4"
<b>OMC</b>	Cabin Interior Height: 57 1/4"
120	Rec. Cap. (Lbs.) 2000 2200***
140	Rec. Cap. (Persons) 10
	H.P. 165 170**
	Fuel Cap. : 36 gal. 18 gal. **
	Wt. Sys. Dry: 1745 lbs. 1410 lbs.**

## Chieftain 18 O.B.



Tan

	Center Length: 18' 6"
	Beam: 82"
	Overall Height: 75 1/4"
	Transom: H. 21" W. 78 1/2"
	Interior Side Depth: 28"
	Cabin Interior Height: 50 1/2"
	Rec. Cap. (Lbs.) 1900
	Rec. Cap. (Persons) 8
	H.P. 150
	Fuel Capacity: 18 gal.
	Wt. Sys. Dry: 1030 lbs.

\*Estimated Weight \*\*Applies only to the O.B. Model. † Applies only to the Convertible Model.

# HOW STARCRAFT PERFORMANCE IS BUILT ON INNOVATIVE ENGINEERING

All deck hardware is stainless or chrome to resist corrosion. It's bolted into place through wood mounting blocks for extra strength.

High-stress areas in the bow, chine and transom get an extra layer of woven roving for added strength.

The hull and decks are made of 5052 marine aluminum for maximum corrosion resistance.

Positive flotation material is added to the hull to meet or exceed B.I.A. and Coast Guard regulations.

Lapstraking is rolled into hull sides to add strength without adding weight.

Seams at the chine are sealed with rubber tape and liquid sealer, then double-riveted.

Strong aircraft-type construction is used throughout the boat. For example, the hull is unitized to the keel and interior ribs with solid aluminum rivets.

The one-piece aluminum bottom eliminates a center-keel seam.

The plywood floor is fiberglassed into place to complete the strong truss type of hull support.

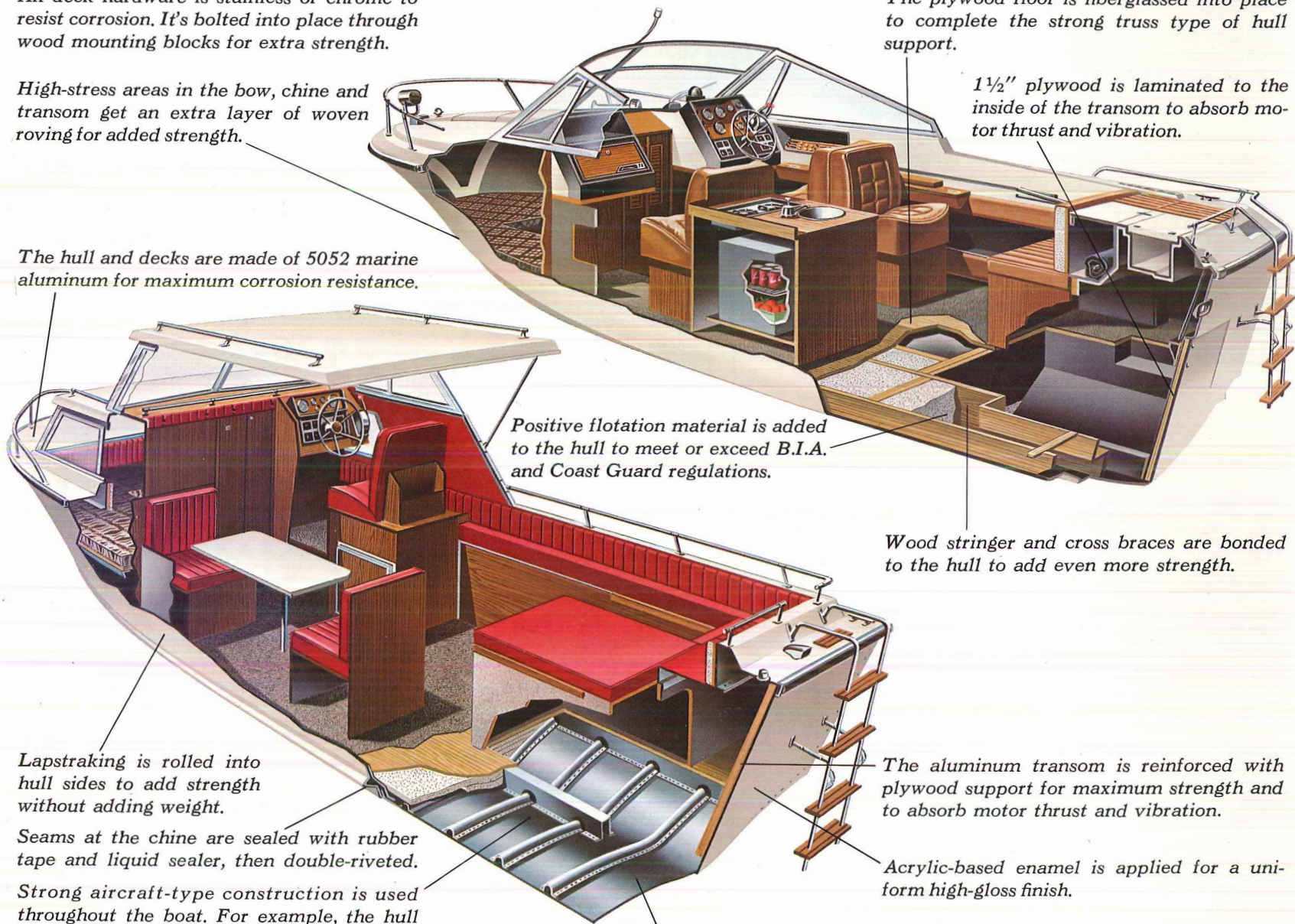
1½" plywood is laminated to the inside of the transom to absorb motor thrust and vibration.

Wood stringer and cross braces are bonded to the hull to add even more strength.

The aluminum transom is reinforced with plywood support for maximum strength and to absorb motor thrust and vibration.

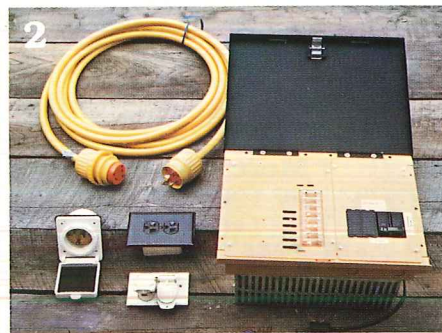
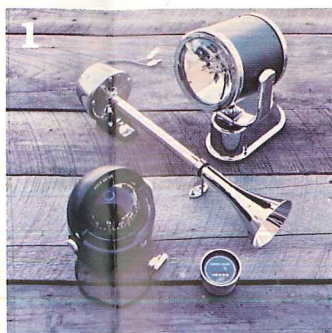
Acrylic-based enamel is applied for a uniform high-gloss finish.

Paints are quick cured to a hard high gloss in Starcraft's drying ovens.



# OPTIONS

1. Big Water Package
2. 110V Shore Power System
3. Galley Unit
4. Swim Platform
5. Full Camper Canvas
6. Marine Head



All product illustrations and specifications are based on information available at the time of publication. Some of the equipment shown separately and on product illustrations is optional at extra cost.

Starcraft reserves the right to make changes with notice or obligation. Your local Starcraft dealer will have exact specifications and product offerings.

**ADVANCE COPY**  
NOT INTENDED FOR CONSUMER USE.  
Specifications, standards and options are not necessarily accurate. Also colors shown may not be representative of actual product.

YOUR STARCRAFT DEALER

